

- 1** 在使用二线式的磁性开关时，一定要串接负载后才能使用，否则会因电流过大导致磁性开关烧毁。

1. Do not exceed specification, permanent damage to the sensor may occur.
- 2** 在使用 (DC) 直流电源时，棕色线要接在高电位 (+)，蓝色线接在低电位 (-)，否则指示灯不会亮。若是接线非上述的情形，并不会损坏磁性开关，只要将两条接线对调，指示灯即可正常指示。

2. For reed switch type sensors, polarity must also be observed for the proper function of LED. Connect the brown wire in series with load positive (+) and the blue wire to negative (-) of power source. If the polarity is reversed, reed switch remain functional but LED will remain in "OFF" state.
- 3** 在使用二线式的无接点型式磁性开关时，一定要使用 (DC) 直流电源，并注意接线方式。棕色线应接在高电位 (+)，蓝色线接在低电位 (-)。棕色、蓝色两条线若有接错时，则可能会导致磁性开关损坏。

In the use of second-line type non-contact type magnetic switch, be sure to use DC power supply (DC), and please pay attention to the connection mode. Brown line in high potential (+), they can catch the blue line in low potential (-). Brown, blue two lines if there is a mistake, may lead to damage of magnetic switch.
- 4** 在使用三线式的无接点型式磁性开关时，一定要使用 (DC) 直流电源，并注意 NPN 或 PNP 接线方式。

  - 棕色线要接在高电位 (+)，蓝色线接在低电位 (-)，黑色线串接至负载。
  - 棕色、蓝色、黑色等三条线若有接错时，则可能会导致磁性开关损坏。

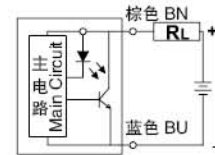
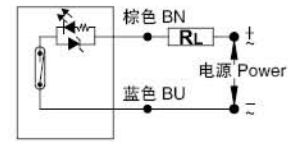
4. For solid-state type sensors, polarity must also be observed. Connect brown wire to the positive (+) and the blue to the negative (-) of DC power source. The black wire must connect to the load only. If the black wire is accidentally connected to the power source, permanent damage to the sensor may occur.
- 5** 在使用负载为电感性负载（如继电器、电磁阀）时，请在负载端并接保护元件，如此可延长磁性传感器寿命。

  - 若接线到 (DC) 直流电感性负载时，请并接一个二极管在负载上，并注意二极管之极性方向，接错时可能会导致磁性开关损坏。
  - 若接线到 (AC) 交流电感性负载时，请并接一个 R-C 回路在负载上。

5. An external protection circuit may be required if the reed switch is used with inductive load, such as relay or solenoid. For DC inductive load, attach an external diode parallel to the load and use R-C circuit parallel with AC inductive load as illustrated below.
- 6** 使用磁性开关时，应尽量远离强磁场或周边有导磁金属之环境，以避免干扰。

6. Keep sensors away from strong magnetic field to prevent malfunctions.
- 7** 当负载为电容性负载或电线长度在 10 米以上时，请串接一个电感器 (560~1000 μH)，电感器尽量靠近磁性开关处，如此可确保磁性开关的正常动作。

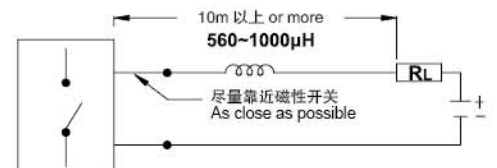
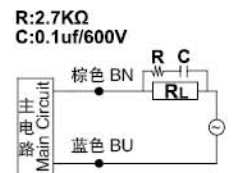
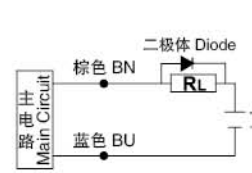
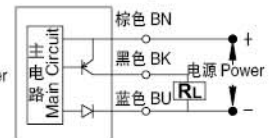
7. When using reed switch with capacitive load or if the lead wire length exceed 10-meter, an inductor (560 ~ 1000 μH) or SR-1 ( surge suppressor ) must be installed in series with the sensor to prevent damage (Sticking effect).



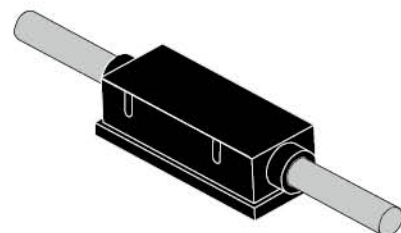
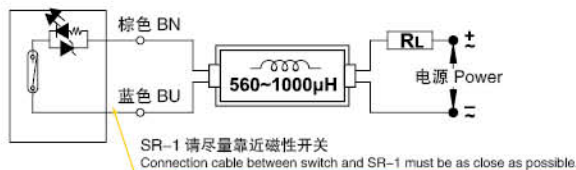
(NPN 输出 Output)



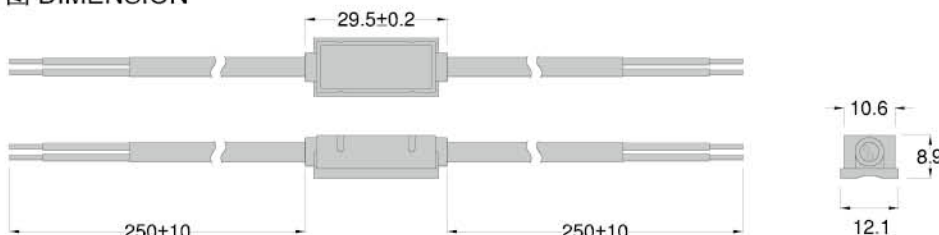
(PNP 输出 Output)



## 型号 MODEL: SR-1



## 尺寸图 DIMENSION



单位 Unit: mm