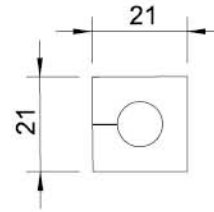


## KT 模块 (小) Inserts, small

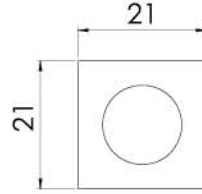
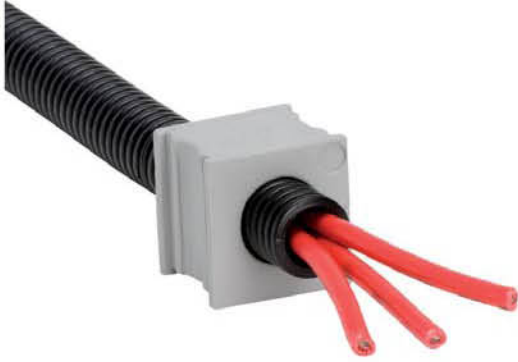


材料 Material: 合成橡胶 Elastomer  
 阻燃等级 Flame class: UL94-V0, 自熄灭 Self-extinguishing  
 防护等级 Protection degree: IP65  
 温度范围 Temperature: -40°C to +90°C (静态 Static)  
 特性 Properties: 无卤, 无硅 Halogen-free, silicone-free

示意图 Description	型号 Type	订货号 Part No. 灰色 Grey	夹紧范围 Clamping range
BTK 	BTK	99041251	无
KT (小) 	KT 2	99039934	2-3 mm
	KT 3	99041203	3-4 mm
	KT 4	99041204	4-5 mm
	KT 5	99041205	5-6 mm
	KT 6	99041206	6-7 mm
	KT 7	99041207	7-8 mm
	KT 8	99041208	8-9 mm
	KT 9	99041209	9-10 mm
	KT 10	99041210	10-11 mm
	KT 11	99041211	11-12 mm
	KT 12	99041212	12-13 mm
	KT 13	99041213	13-14 mm
	KT 14	99041214	14-15 mm
	KT 15	99041215	15-16 mm
	KTs 16	99039901	16 mm
	KT 2/x 	KT 2/3	99039939
KT 2/4		99039906	2×ø4mm
KT 2/5		99041200	2×ø5mm
KT 2/6		99041201	2×ø6mm
KT 2/7		99041202	2×ø7mm
KT 2/8		99039917	2×ø8mm
KT 4/x 	KT 4/3	99039914	4×ø3mm
	KT 4/4	99039909	4×ø4mm
	KT 4/5	99039908	4×ø5mm
	KT 4/6	99039932	4×ø6mm

# KEL 电缆引入系统 CABLE ENTRY SYSTEMS

## KTP 模块 (小) Inserts, small

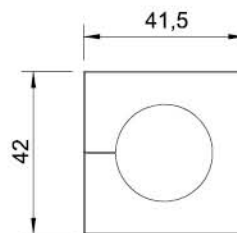


材料 Material: 合成橡胶 Elastomer  
 阻燃等级 Flame class: UL94-V0, 自熄灭 Self-extinguishing  
 防护等级 Protection degree: IP65  
 温度范围 Temperature: - 40°C to + 90°C (静态 Static)  
 特性 Properties: 无卤 Halogen-free


示意图 Description	型号 Type	订货号 Part No. 灰色 Grey	夹紧范围 Clamping range
 KTP-D   横截面 KDP	KTP-A	99042565	2.5 - 6.5 mm
	KTP-B	99040475	4 - 7.5 mm
	KTP-C	99046510	6.5 - 10 mm
	KTP-D	99049513	9.5 - 13 mm
	KTP-E	99041316	13 - 16 mm
KTP 堵头	KTP-BTG1	99041410	适用于 KTP-A/B/C
	KTP-BTG2	99041416	适用于 KTP-D/E

KEL 电缆引入系统

## KT 模块 (大) Inserts, large

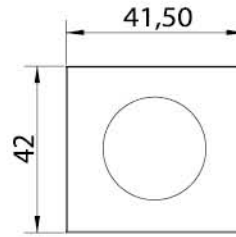
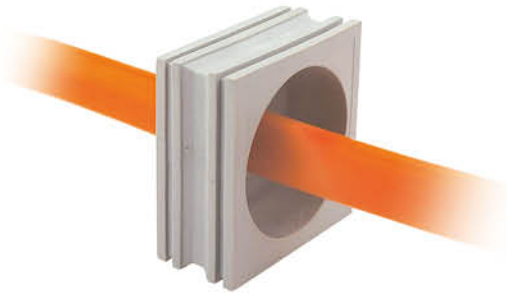


材料 Material: 合成橡胶 Elastomer  
 阻燃等级 Flame class: UL94-V0, 自熄灭 Self-extinguishing  
 防护等级 Protection degree: IP65  
 温度范围 Temperature: - 40°C to + 90°C (静态 Static)  
 特性 Properties: 无卤, 无硅 Halogen-free, silicone-free

示意图 Description	型号 Type	订货号 Part No. 灰色 Grey	夹紧范围 Clamping range
ATG 	ATG	99041253	适配器插入
BTG 	BTG	99041252	填充块
KT (大) 	KT 16 KT 17 KT 18 KT 19 KT 20 KT 21 KT 22 KT 23 KT 24 KT 25 KT 26 KT 27 KT 28 KT 29 KT 30 KT 31 KT 32 KT 33 KT 34	99041216 99041217 99041218 99041219 99041220 99041221 99041222 99041223 99041224 99041225 99041226 99041227 99041228 99041229 99041230 99041231 99041232 99041233 99041234	16-17 mm 17-18 mm 18-19mm 19-20 mm 20-21 mm 21-22mm 22-23 mm 23-24 mm 24-25mm 25-26 mm 26-27 mm 27-28mm 28-29 mm 29-30 mm 30-31 mm 31-32 mm 32-33 mm 33-34 mm 34-35 mm

# KEL 电缆引入系统 CABLE ENTRY SYSTEMS

## KTB 模块 (大) Inserts, large



材料 Material: 合成橡胶 Elastomer

阻燃等级 Flame class: UL94-V0, 自熄灭 Self-extinguishing

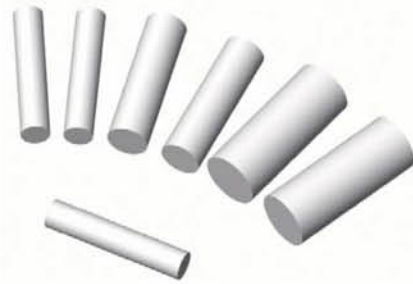
防护等级 Protection degree: IP65

温度范围 Temperature: -40°C to +90°C (静态 Static)

特性 Properties: 无卤 Halogen-free

示意图 Description	型号 Type	订货号 Part No. 灰色 Grey	夹紧范围 Clamping range
 KTB-A	KTB-A	99041318	13 - 18 mm
 KTB-B	KTB-B	99041823	18 - 23 mm
 KTB-C	KTB-C	99042328	23 - 28 mm
 KTB-D	KTB-D	99042833	28 - 33 mm
KTB 堵头	 KTB-BTG1	99045224	适用于 (KTB-A/B)
	 KTB-BTG2	99045234	适用于 (KTB-C/D)

## ST 模块堵头 Plugs (用于 KT/KTMB 模块)



材料 Material: 聚酰胺 Polyamide (PA), 白色 Withe  
 阻燃等级 Flame class: UL94-V0, 自熄灭 Self-extinguishing  
 温度范围 Temperature: - 40°C to + 120°C  
 特性 Properties: 无卤, 无硅 Halogen-free, silicone-free

示意图 Description	型号 Type	订货号 Part No.	直径 Diameter D	长度 Length L
	ST2	99042909	2.0mm	25mm
	ST3	99042901	3.0mm	25mm
	ST4	99042908	4.0mm	25mm
	ST5	99042906	5.0mm	25mm
	ST6	99042903	6.0mm	25mm
	ST7	99042905	7.0mm	25mm
	ST8	99042899	8.0mm	20mm
	ST9	99042897	9.0mm	20mm
	ST10	99042895	10.0mm	20mm
	ST11	99042893	11.0mm	20mm
	ST12	99042891	12.0mm	20mm
	ST13	99042889	13.0mm	20mm
	ST14	99042887	14.0mm	20mm
	ST15	99042885	15.0mm	20mm
	ST16	99042883	16.0mm	20mm
	ST17	99042881	17.0mm	20mm