

HM-012 模块连接器 MODULAR CONNECTORS

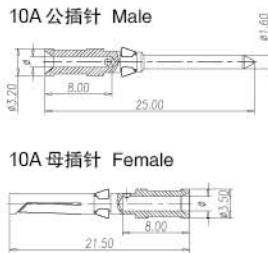
额定电流 Rated current: 10A 额定电压 Rated voltage: 250V

接线方式: 冷压针压接 Termination methods: Crimp terminal (冷压针请单独订购 Order crimp contacts separately)	型号 Type	订货号 Part No.		尺寸图 Drawing (mm)	
		公接插针 Male insert	母接插针 Female insert		
 M F	HM-012-M	5140123001		M	
	HM-012-F		5140123101	F	

10A 镀银冷压针 Crimp contacts, silver-plated

技术参数 Technical data

材质: 铜镀银 / 金
Material: Copper, hard silver / gold plated
接触电阻 Contact resistance: $\leq 3\text{m}\Omega$
接线形式: 冷压接线
Termination methods: Crimp connection



线径 (mm) Wire gauge	接线长度 Stripping length	公接插针 Male insert 型号 Type	公接插针 Male insert 订货号 Part No.	母接插针 Female insert 型号 Type	母接插针 Female insert 订货号 Part No.
0.14-0.37	AWG26-22	CDM-0.37	3150006104	CDF-0.37	3150006204
0.5	AWG20	CDM-0.5	3150006103	CDF-0.5	3150006203
0.75	AWG18	CDM-0.75	3150006105	CDF-0.75	3150006205
1.0	AWG18	CDM-1.0	3150006102	CDF-1.0	3150006202
1.5	AWG16	CDM-1.5	3150006101	CDF-1.5	3150006201
2.5	AWG14	CDM-2.5	3150006106	CDF-2.5	3150006206

技术参数 Technical characteristics

1 插芯 Inserts

接插件针数 Inserts Number of contacts	12
依据 DIN EN 61984 的电气数据 Electrical data	
- 额定电流 Rated current	10A
- 额定电压 Rated voltage	250V
- 额定脉冲电压 Rated impulse voltage	4kV
- 污染程度 Pollution degree	3
依据 UL 的额定电压 Rated voltage	600V
绝缘电阻 Insulation resistance	$\geq 10^{10}\Omega$
材料 Material	聚碳酸酯 Polycarbonate
工作温度范围 Limiting temperatures	$-40^{\circ}\text{C} \dots +125^{\circ}\text{C}$
依据 UL94 阻燃等级 Flammability	V0
可拔插次数 Mating cycles	≥ 500

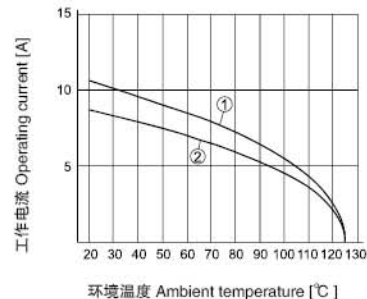
2 插针 Contacts

材料 Material	铜合金 Copper alloy
表面处理 Surface	镀银 Hard-silver plated
	镀金 Hard-gold plated
接触电阻 Contact resistance	$\leq 3\text{m}\Omega$
冷压连接 Crimp terminal	
-mm ²	0.14-2.5 mm ²
-AWG	26-14

电流负载能力 Current carrying capacity

电流负载能力所受的限制主要来自包含接插针的接插体可承受的最大温度测试和控制过程依据 DIN EN 60512-5

Current load capacity, mainly from the restrictions include plug the plug of the needle body can withstand maximum temperature Testing and control process according to DIN EN 60512-5



- ① 24B 外壳 带 6 个模块, 导线截面 Wire gauge: 1.5 mm²
- ② 24B 外壳 带 6 个模块, 导线截面 Wire gauge: 1.0 mm²

HM-017 模块连接器 MODULAR CONNECTORS

额定电流 Rated current: 10 A 额定电压 Rated voltage: 160 V

接线方式: 冷压针压接 Termination methods: Crimp terminal (冷压针请单独订购 Order crimp contacts separately)	型号 Type	订货号 Part No.		尺寸图 Drawing (mm)	
		公接插针 Male insert	母接插针 Female insert		
 M F	HM-017-M	5140173001		M	 
	HM-017-F		5140173101	F	 

10A 镀银冷压针 Crimp contacts, silver-plated

技术参数 Technical data

材质: 铜镀银 / 金
Material: Copper, hard silver / gold plated
接触电阻 Contact resistance: $\leq 3\text{m}\Omega$
接线形式: 冷压接线
Termination methods: Crimp connection

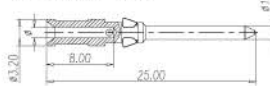
CDM



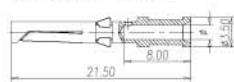
CDF



10A 公插针 Male



10A 母插针 Female



线径 (mm ²) Wire gauge	接线长度 Stripping length	公接插针 Male insert 型号 Type	公接插针 Male insert 订货号 Part No.	母接插针 Female insert 型号 Type	母接插针 Female insert 订货号 Part No.
0.14-0.37	AWG26-22	CDM-0.37	3150006104	CDF-0.37	3150006204
0.5	AWG20	CDM-0.5	3150006103	CDF-0.5	3150006203
0.75	AWG18	CDM-0.75	3150006105	CDF-0.75	3150006205
1.0	AWG18	CDM-1.0	3150006102	CDF-1.0	3150006202
1.5	AWG16	CDM-1.5	3150006101	CDF-1.5	3150006201
2.5	AWG14	CDM-2.5	3150006106	CDF-2.5	3150006206

技术参数 Technical characteristics

1 插芯 Inserts

接插件针数 Inserts Number of contacts	17
依据 DIN EN 61984 的电气数据 Electrical data	
- 额定电流 Rated current	10A
- 额定电压 Rated voltage	160V
- 额定脉冲电压 Rated impulse voltage	2.5kV
- 污染程度 Pollution degree	3
依据 UL 的额定电压 Rated voltage	250V
绝缘电阻 Insulation resistance	$\geq 10^{10}\Omega$
材料 Material	聚碳酸酯 Polycarbonate
工作温度范围 Limiting temperatures	-40°C ... +125°C
依据 UL94 阻燃等级 Flammability	V0
可拔插次数 Mating cycles	≥ 500

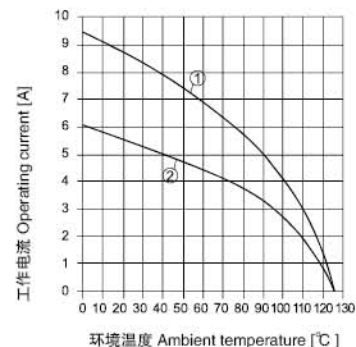
2 插针 Contacts

材料 Material	铜合金 Copper alloy
表面处理 Surface	镀银 Hard-silver plated 镀金 Hard-gold plated
接触电阻 Contact resistance	$\leq 3\text{m}\Omega$
冷压连接 Crimp terminal	
- mm ²	0.14-2.5 mm ²
- AWG	26-14

电流负载能力 Current carrying capacity

电流负载能力所受的限制主要来自包含接插针的插接体可承受的最大温度测试和控制过程依据 DIN EN 60512-5

Current load capacity, mainly from the restrictions include plug the plug of the needle body can withstand maximum temperature Testing and control process according to DIN EN 60512-5



- ① 24B 外壳带 6 个模块, 导线截面 Wire gauge: 1.5mm²
② 24B 外壳带 6 个模块, 导线截面 Wire gauge: 1.0 mm²